



XVan

Key Points

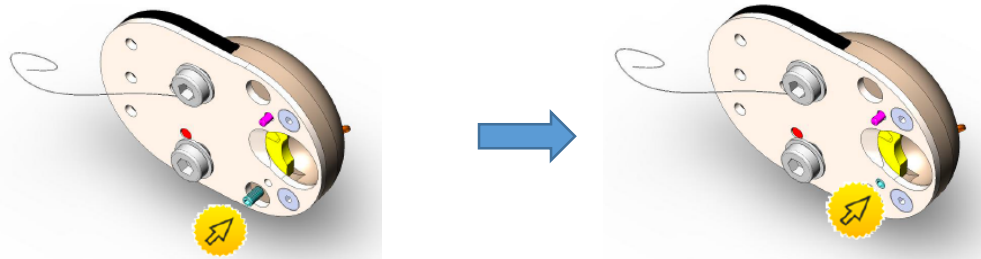
1) AUTOMATIC & MANUAL OPERATION

Automatic to Manual Conversion

The Xvan offers the possibility to choose the operating mode: manual or automatic.

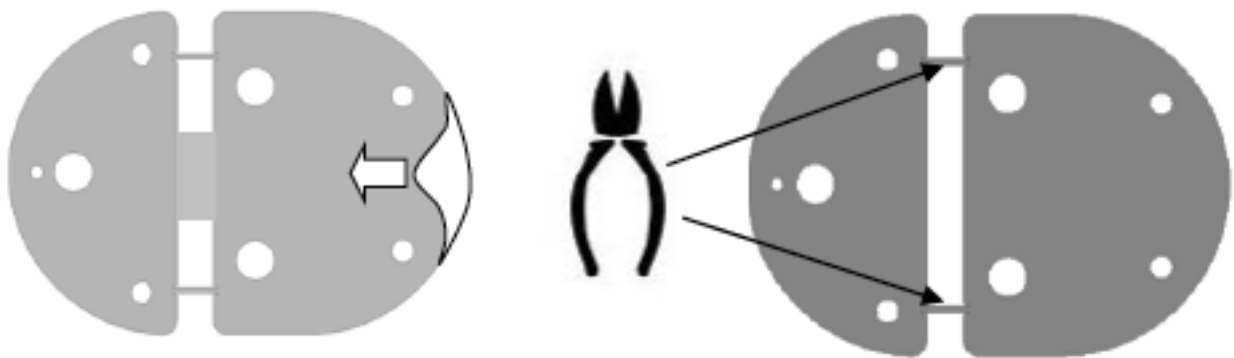
Before the installation or even, it is possible to convert the mode without having to remove the lock from the vehicle door.

The padlock is supplied as default in the Automatic mode. To convert it to Manual mode with the door open, unscrew the M4 grain indicated in the image below.

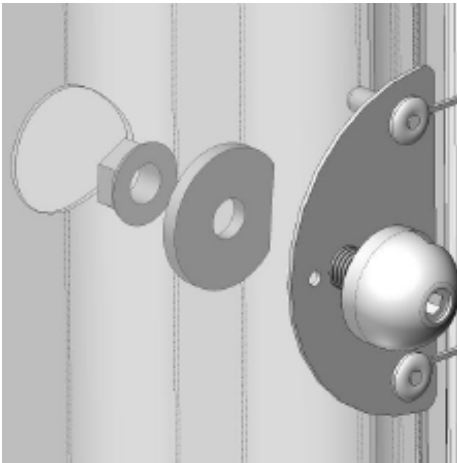


2) FAST INSTALLATION – SELF ADHESIVE DRILLING TEMPLATE

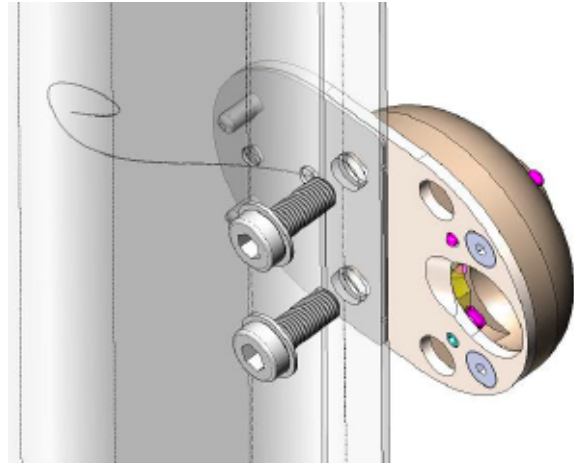
The XVAN has a self adhesive drilling template that helps the installer to make a proper drilling.



Finally cut the two-metal connecting junctions on the template.

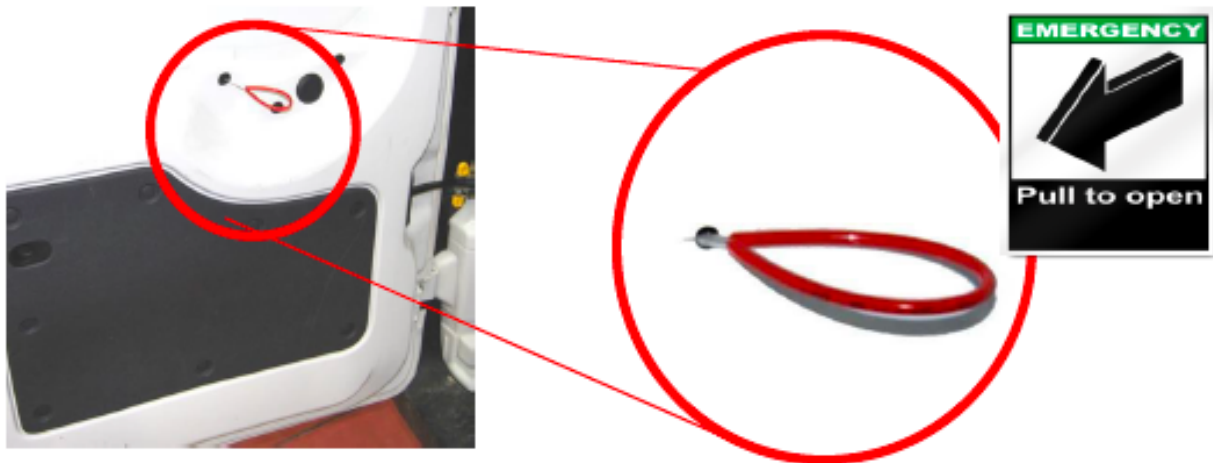


Apply two rivets on the drilling template to keep it tight and avoid movements while drilling; install the striker with its backplate from inside the door panel.



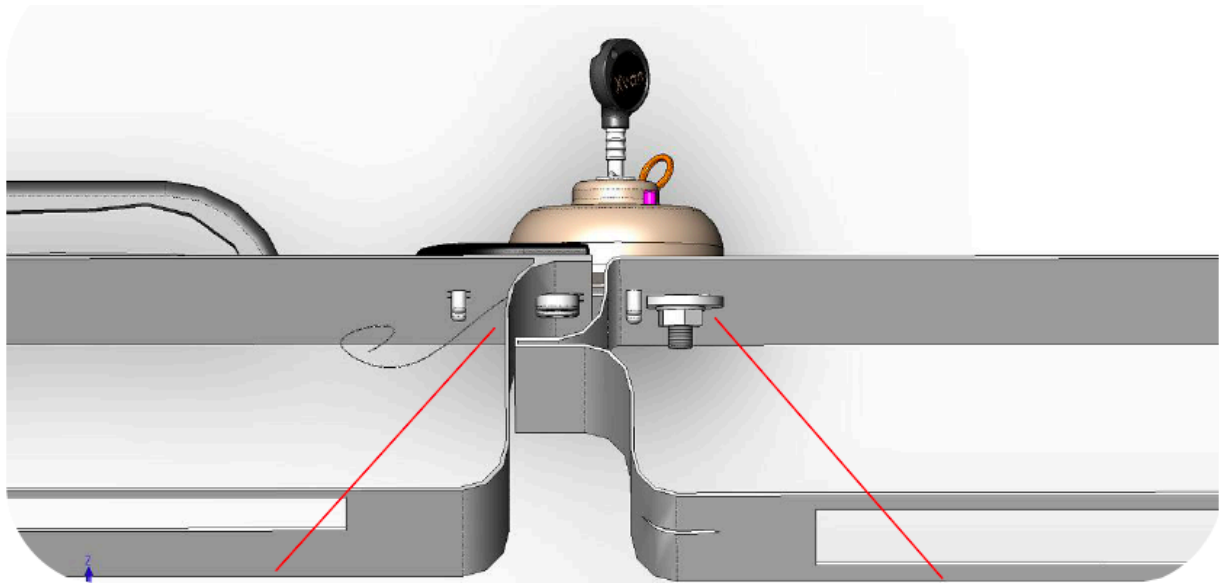
Apply two M8 bolts from inside the door keeping the lock body and other 2 rivets to keep the template tight. Finally, install the emergency release cable.

3) INTERNAL EMERGENCY RELEASE



Finally, to install the emergency cable just make a small hole through the sheet metal (or panel if necessary) and pass the cable directly connected to the locking cam of the lock.

FINAL CONFIGURATION



Armor | Door that opens

The lock is applied on the tailgate that opens and fixed over the edge of the door using two **M8 bolts** threaded directly on the armor and to **D5 stainless steel rivets**.

Strike Plate | Fixed door

The fixing of the strike plate is made by using 1 **M8 nut**, threaded on a counterplate placed inside the door. 2 stainless steel 5mm rivets align and fix the outer reinforcement plate.